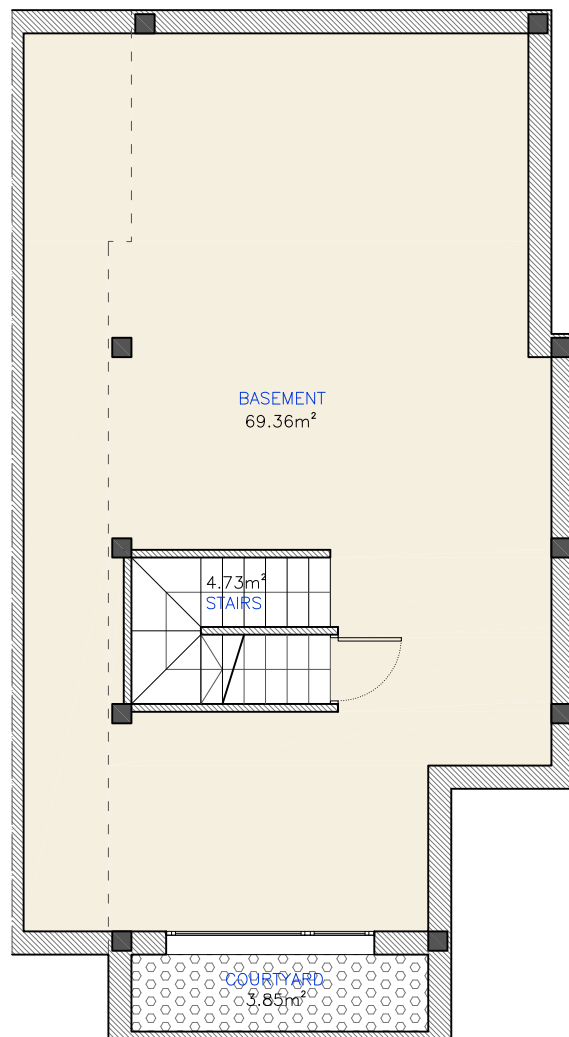
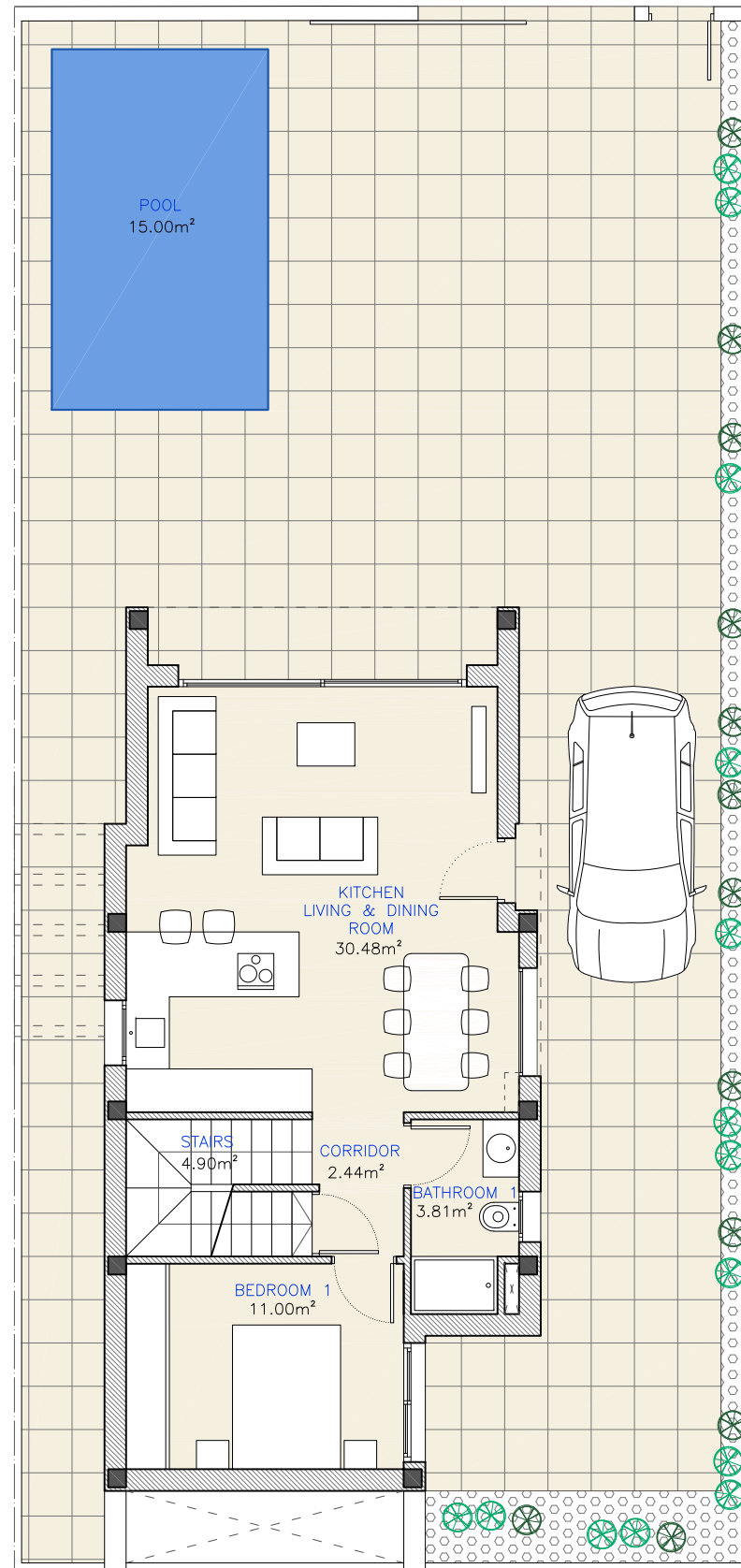


VILLA TYPE 3 BEDROOMS & BASEMENT

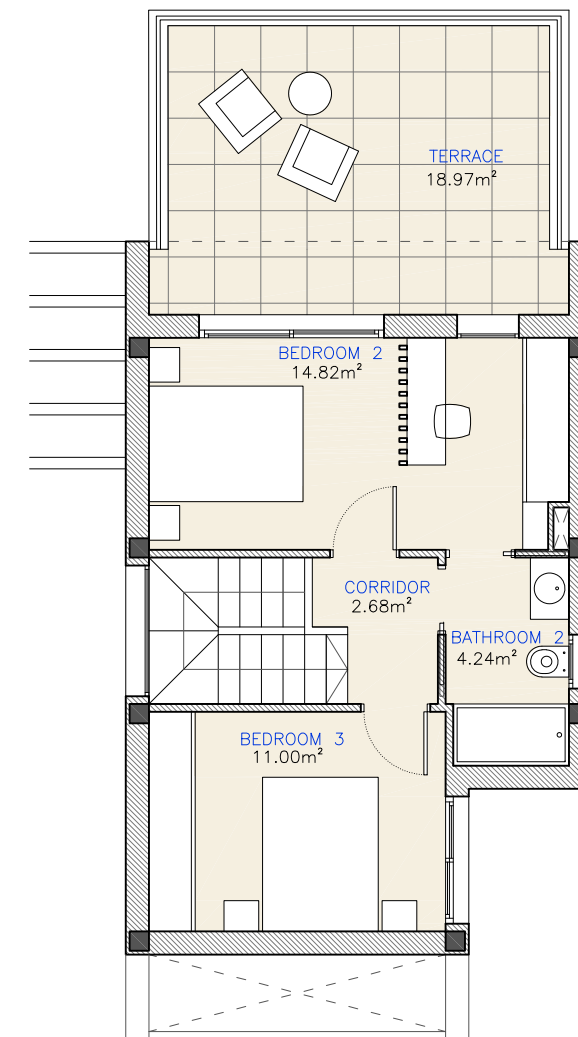
BASEMENT/SÓTANO.....	84,74 M ²
GROUND FLOOR/PLANTA BAJA.....	68,59 M ²
FIRST FLOOR/PLANTA PRIMERA.....	49,94 M ²
TOTAL BUILT AREA/ SUP. TOTAL CONSTRUIDA.....	203,27 M²
TERRACE/TERRAZA.....	18,97 M ²
TOTAL	222,24 M²



BASEMENT



GROUND FLOOR



FIRST FLOOR